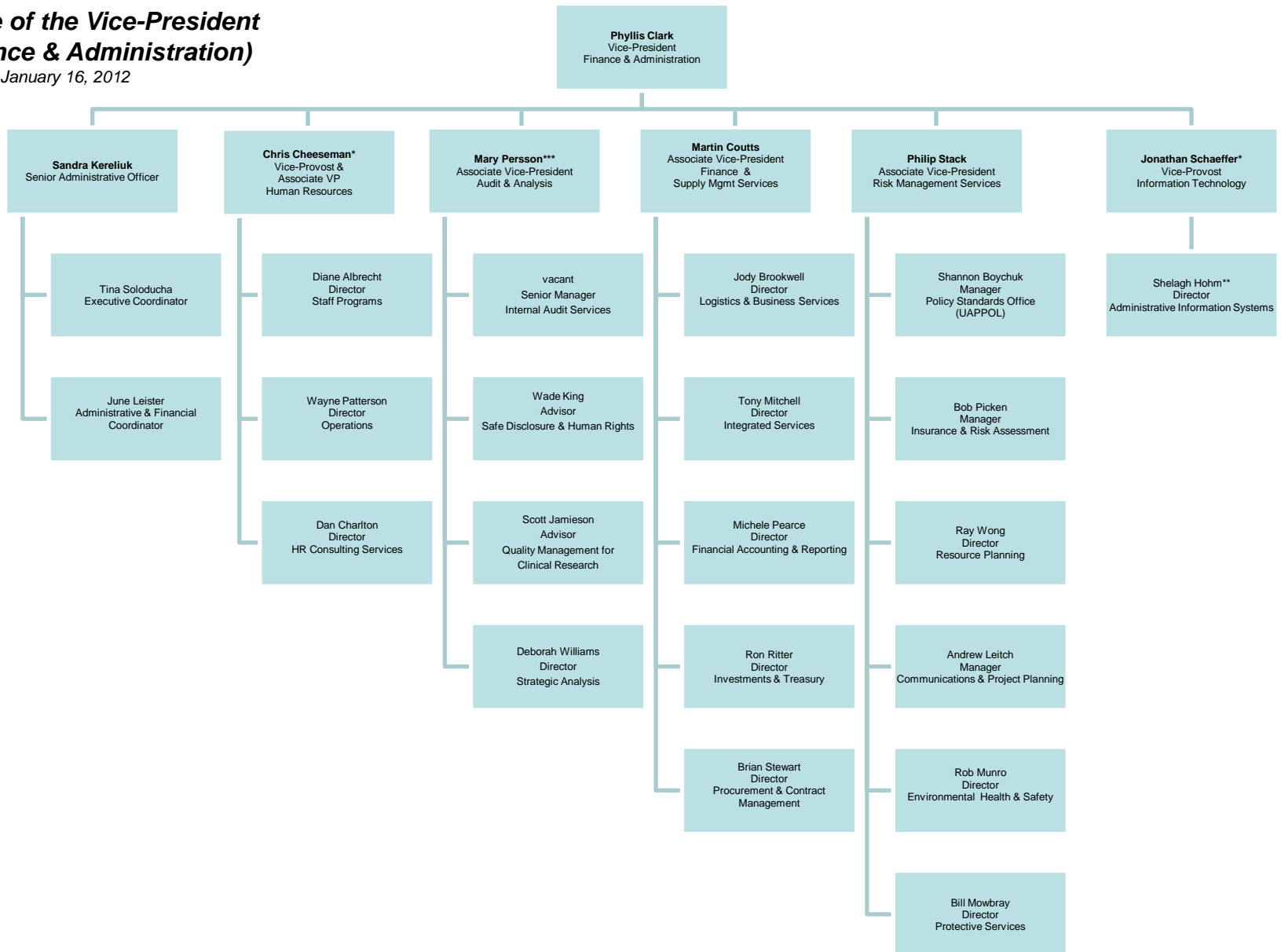


# Organizational Chart

## Office of the Vice-President (Finance & Administration)

Effective January 16, 2012



\* Dual Report to VP (F&A) and Provost & VP (Academic)

\*\* Dual Report to VP (F&A) and Vice-Provost (Info Tech)

\*\*\* Dual Report to VP (F&A) and Board of Governors